

# PUBLIC MEETING

Papohaku Ranchland Target Range  
Molokai Island, Hawaii  
Property Number H09HI003201  
6 May 2025



US Army Corps  
of Engineers ®  
Honolulu District

Contract No. W912DY22D0130  
Task Order No. W912DY24F0398



U.S. ARMY

# MEETING AGENDA

- Introductions
- Site Overview
- Project Status
  - Next Steps
  - Comprehensive Environmental Response, Compensation, and Liability Act Process
  - Remedial Investigation Summary
  - Feasibility Study Overview
  - Community Relations Plan/Community Questionnaire
  - Administrative Record
- Questions and Answers
- 3Rs of Explosives Safety Education Program



US Army Corps  
of Engineers®  
Honolulu District



*Previous public meetings held on Molokai for the Papohaku Ranchland Target Range.*



U.S. ARMY

# INTRODUCTIONS

3



US Army Corps  
of Engineers ®  
Honolulu District

- U.S. Army Engineering and Support Center
- U.S. Army Corps of Engineers, Honolulu District
- DAWSON



*Photos of field activities at the Papohaku Ranchland Target Range.*



Source: Final Remedial Investigation, Papohaku Ranchland Target Range, Molokai Island, Hawaii, FUDS Property Number H09HI0032, May 2023); and USACE, Honolulu District Papohaku Ranchland Target Range website at <https://www.poh.usace.army.mil/Missions/Environmental/FUDS/Papohaku/>





U.S. ARMY

# PAPOHAKU RANCHLAND TARGET RANGE

## SITE OVERVIEW

4

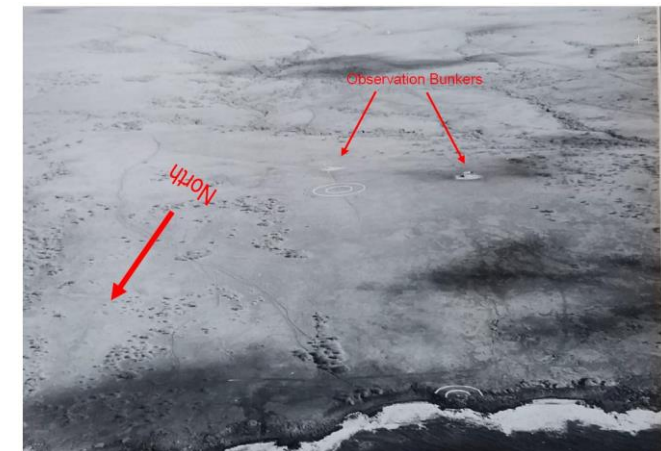


US Army Corps  
of Engineers®  
Honolulu District

- The Papohaku Ranchland Target Range Munitions Response Site consists of 1,681 acres on Molokai Island in Maui County, Hawai'i, approximately 4 miles west of Maunaloa.
- The site served as a target area for aerial (air-to-ground) bombardment and gunnery practice during World War II and potentially into the mid-1960s.
  - There were 3 targets at Papohaku Ranchland Target Range. Additionally, a restricted danger zone, approximately 6,900 feet wide, extended about 3 miles from the shore northwest into the Kaiwi Channel.



Source: National Geographic, Esri, DeLorme, HERE, UNEP-WCMC, USGS, NASA, NOAA, Increment P.



Aerial rocket bombing target photographed in October 1944.



U.S. ARMY

# PAPOHAKU RANCHLAND TARGET RANGE SITE OVERVIEW

5



US Army Corps  
of Engineers®  
Honolulu District

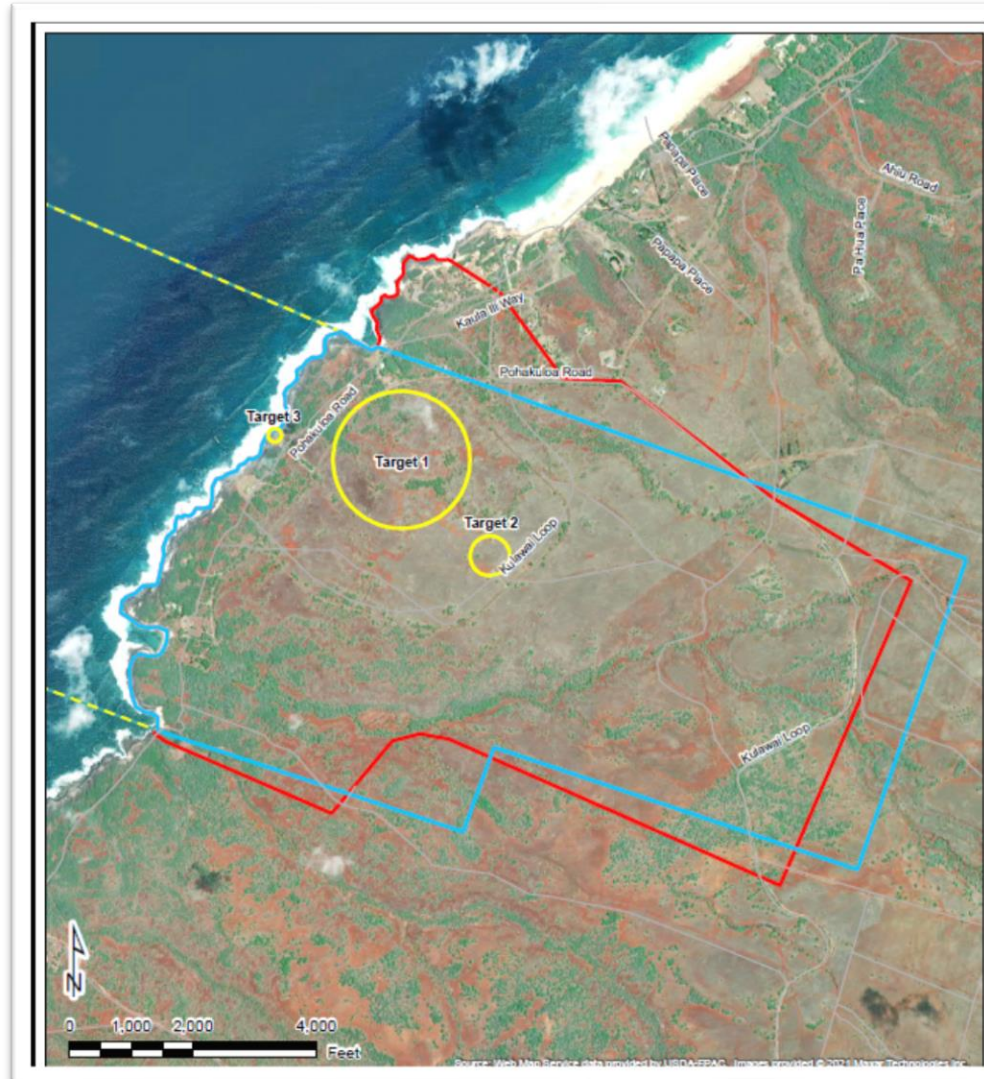


Figure showing the site boundary, leased areas, three historical target areas, and offshore stay clear zone.

Source: Final Remedial Investigation, Papohaku Ranchland Target Range, Molokai Island, Hawaii, FUDS Property Number H09HI0032, May 2023.





U.S. ARMY

# PAPOHAKU RANCHLAND TARGET RANGE

## SITE OVERVIEW

6



US Army Corps  
of Engineers®  
Honolulu District

- The site is zoned for agricultural use; however, it is currently used as residential, recreational, and undeveloped and used space.
- There are vacant lots, as well as multiple developed lots mostly on the makai side of the Papohaku Ranchland Subdivision within the site. Four public beach access points are located along the coastal boundary of the site. Three historical target rings and three observation bunkers are also present.



*Terrain at the Papohaku Ranchland Target Range.*



*Warning sign currently located at the site.*



U.S. ARMY

# PAPOHAKU RANCHLAND TARGET RANGE SITE OVERVIEW

7



US Army Corps  
of Engineers®  
Honolulu District

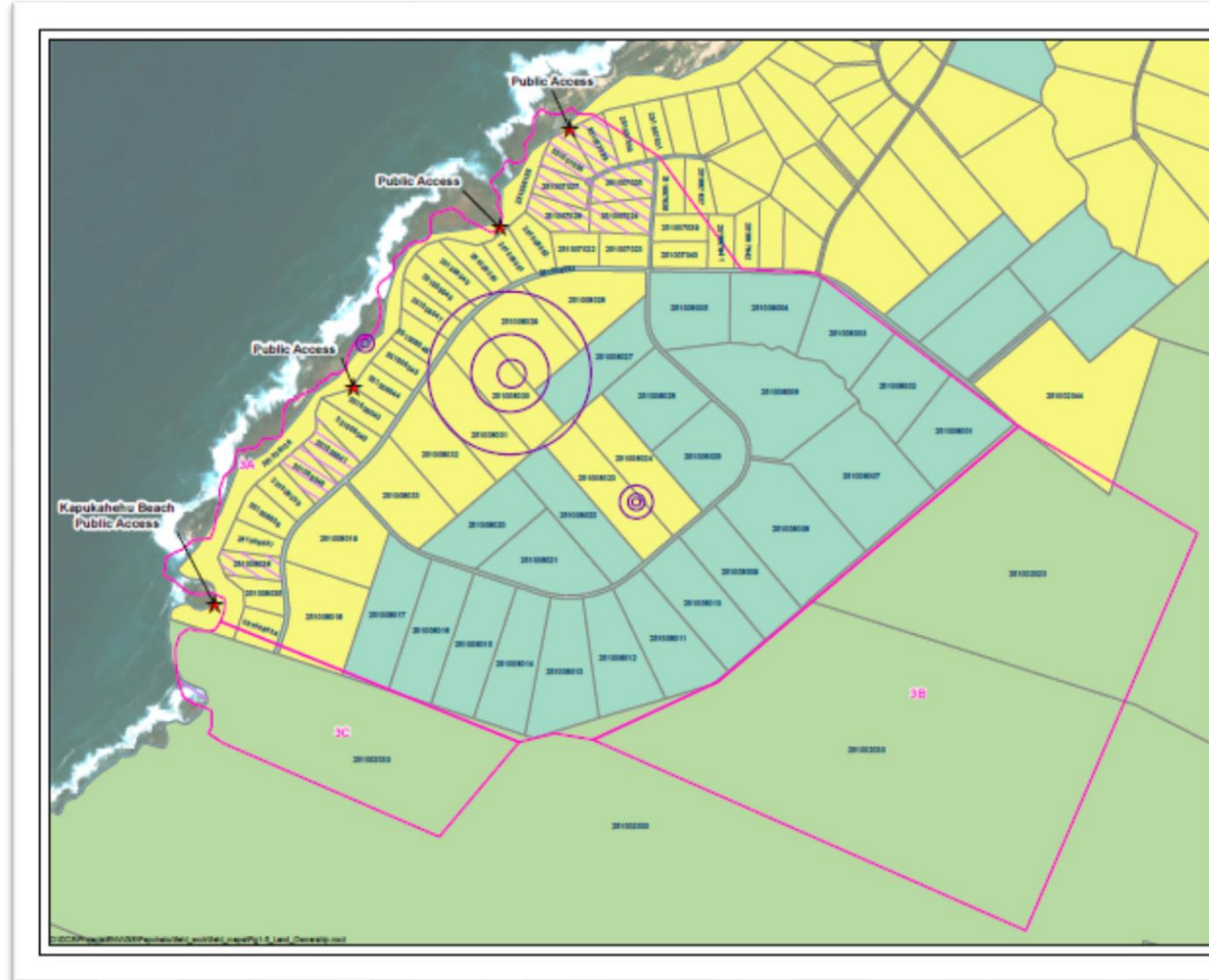


Figure showing the three historical targets, public beach access points, and land parcels.

Source: Final Remedial Investigation, Papohaku Ranchland Target Range, Molokai Island, Hawaii, FUDS Property Number H09HI0032, May 2023.



U.S. ARMY

# PAPOHAKU RANCHLAND TARGET RANGE SITE OVERVIEW

8



US Army Corps  
of Engineers®  
Honolulu District

The following table presents a summary of investigations and findings at the site to date.

Activity	Year	Summary of Findings
Ordnance Survey and Removal Action	1991-1992	Munitions-related items
Defense Environmental Restoration Program – Formerly Used Defense Site Inventory Project Report	1996	Artillery fragments, sub-caliber aircraft rockets, 5-inch-high velocity aircraft rockets, 100-pound water/sand filled practice bombs, and 20 millimeter rounds; high explosive rounds determined to potentially be present.
Engineering Evaluation/Cost Analysis	2001	Munitions and explosives of concern (Mk23 practice bombs, Mk4 signal cartridges, and 2.25-inch rockets) and munitions debris items.
Interim Removal Action	2004	Munitions debris greater than one inch by two inches in size (practice bombs, rockets, and projectiles) removed from the surface; no munitions and explosives of concern were recovered.
Munitions Response Site Prioritization Protocol Development Report	2015	Soil sampling did not identify contaminants; munitions and explosives of concern items were observed on the surface.
Site Review and Status Report	2015	Removal actions were not minimizing explosive safety hazards and were no longer protective of human health and the environment.
Historical Records Review/Memorandum for Record	2020	A bull's eye target and half target were present at the site in the mid-1940s; the Navy leased out approximately 1,728 acres of land; and a 1945 map identified the site targets as former land rocket ranges.
Remedial Investigation	2023	31 unexploded ordnance items and 27,216 pounds of munitions debris were recovered from 0 to 45 inches below ground surface.





U.S. ARMY

# PAPOHAKU RANCHLAND TARGET RANGE PROJECT STATUS

9



US Army Corps  
of Engineers ®  
Honolulu District

## ■ Next Steps

### ➤ Feasibility Study

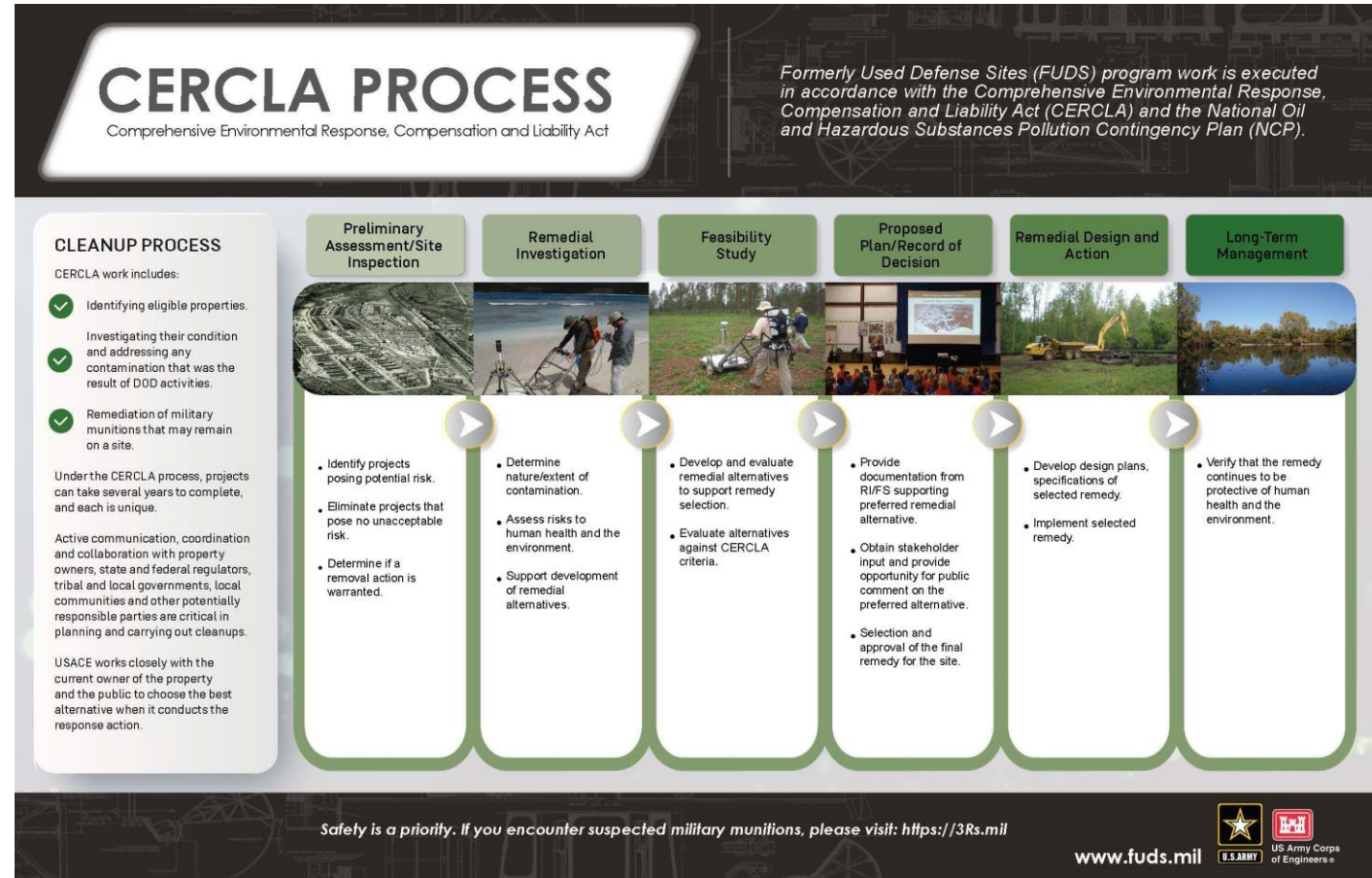
- The Feasibility Study is the mechanism for developing, screening, and evaluating alternative remedial actions.

### ➤ Proposed Plan

- The Proposed Plan is specifically prepared for public review and comment for a minimum of 30 days and summarizes remedial action alternatives and presents the preferred remedial alternative.

### ➤ Record of Decision

- The Record of Decision documents the final selected remedy for a site and is a key communication tool for the public that explains the contamination problems the remedy seeks to address and the rationale for its selection.



Source: [www.fuds.mil](http://www.fuds.mil)



U.S. ARMY

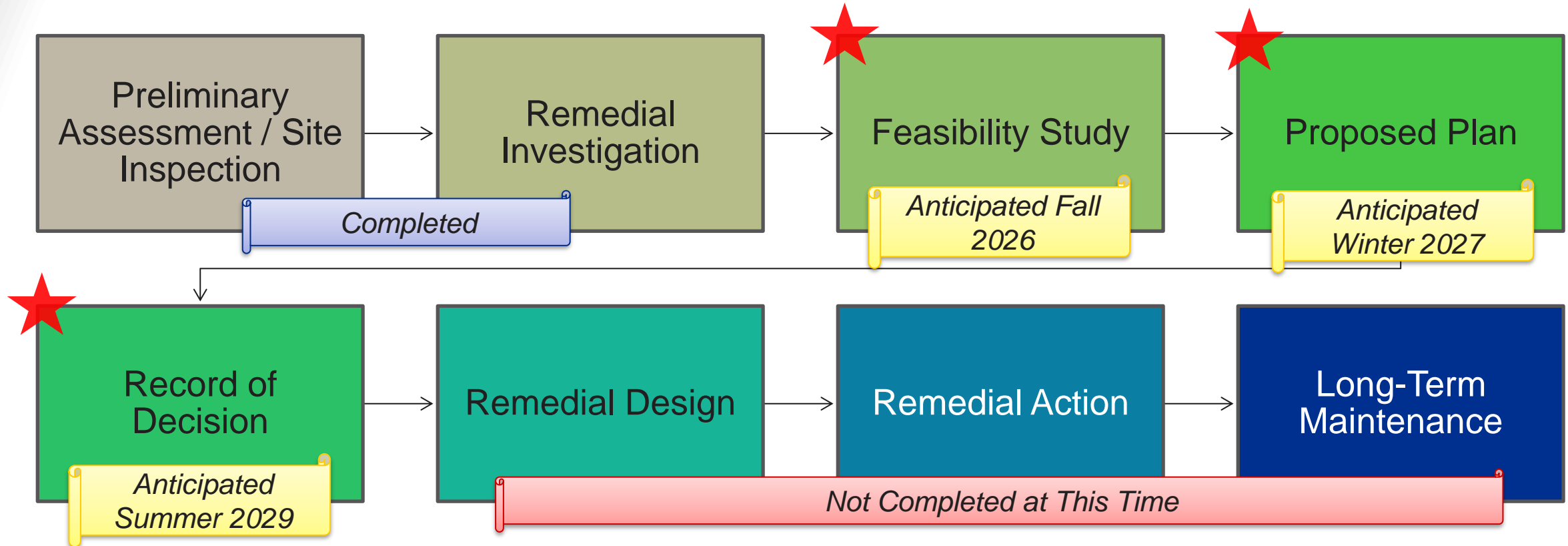
# PAPOHAKU RANCHLAND TARGET RANGE PROJECT STATUS

10



US Army Corps  
of Engineers ®  
Honolulu District

This project will cover three phases of the CERCLA process:





U.S. ARMY

# PAPOHAKU RANCHLAND TARGET RANGE PROJECT STATUS

11



US Army Corps  
of Engineers®  
Honolulu District

## ■ Remedial Investigation Summary

- In 2019, a Remedial Investigation was performed to characterize the nature and extent of munitions contamination and determine if remediation is necessary to protect human health and the environment. Field activities investigated 953 acres and included:
  - Digital geophysical mapping transects and full coverage grids covering about 46 acres and 1.8 acres, respectively.
  - Analog surveys covering approximately 6.5 acres in gulches and rocky coastlines.
  - Advanced geophysical classification full coverage grids covering approximately 1.2 acres.



*Field activities at the Papohaku Ranchland Target Range Site (Source: Final Remedial Investigation, Papohaku Ranchland Target Range, Molokai Island, Hawaii, FUDS Property Number H09HI0032, May 2023).*





U.S. ARMY

# PAPOHAKU RANCHLAND TARGET RANGE PROJECT STATUS

12



US Army Corps  
of Engineers®  
Honolulu District

Remedial investigation activities recovered 31 munitions items and over 27,000 pounds of munitions debris and reduced the risk of encountering munitions at the Papohaku Ranchland Target Range.

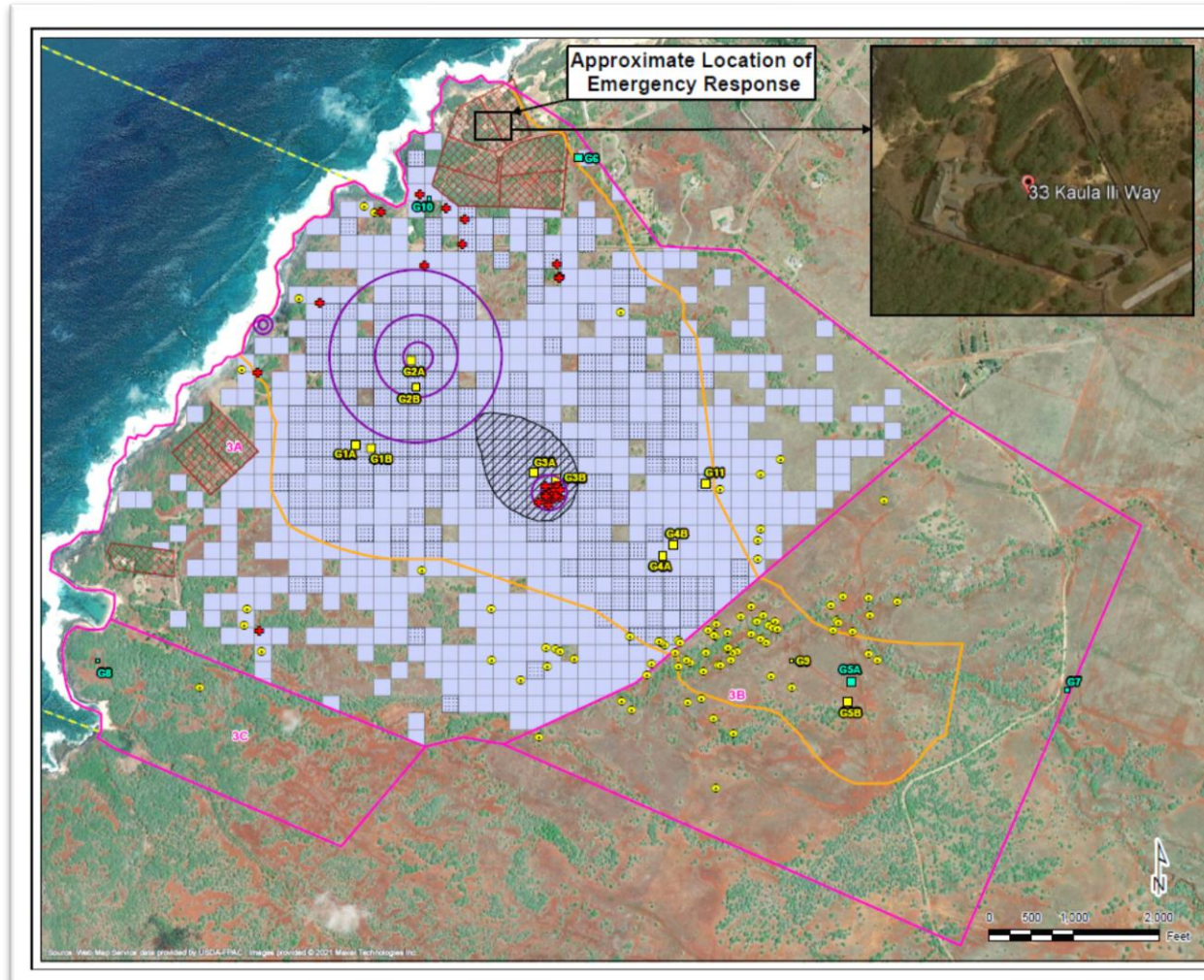


Figure showing the locations of recovered surface and subsurface munitions of explosive concern and munitions debris during the Remedial Investigation.

Source: Final Remedial Investigation, Papohaku Ranchland Target Range, Molokai Island, Hawaii, FUDS Property Number H09HI0032, May 2023.





U.S. ARMY

# PAPOHAKU RANCHLAND TARGET RANGE PROJECT STATUS

13



US Army Corps  
of Engineers®  
Honolulu District

## ■ Feasibility Study Overview

- The Feasibility Study is being conducted to develop and analyze remedial alternatives to address munitions and explosives of concern risks at the site to protect human health and the environment.
- The remedial alternatives will be evaluated against nine Comprehensive Environmental Response, Compensation, and Liability Act criteria to identify the most suitable solution for the site.



*Types of practice munitions found at the site  
(Source: USACE, Honolulu District Papohaku  
Ranchland Target Range website at  
<https://www.poh.usace.army.mil/Missions/Environmental/FUDS/Papohaku/>).*



*Firing and impact debris found at the Papohaku  
Ranchland Target Range (Source: Final  
Remedial Investigation, Papohaku Ranchland  
Target Range, Molokai Island, Hawaii, FUDS  
Property Number H09HI0032, May 2023).*



U.S. ARMY

# PAPOHAKU RANCHLAND TARGET RANGE PROJECT STATUS

14



US Army Corps  
of Engineers ®  
Honolulu District

## ■ **Community Relations Plan – In Progress**

- The Community Relations Plan will identify community concerns, promote public participation in decision-making, and provide accurate information about the project.
- **Community Questionnaire**
  - We want to hear from you! The results from this survey will directly impact what is included in the Community Relations Plan.
  - Please feel free to complete a physical copy tonight or use the QR code below to access the survey online.







U.S. ARMY

# PAPOHAKU RANCHLAND TARGET RANGE PROJECT STATUS

15



US Army Corps  
of Engineers ®  
Honolulu District

## ■ Administrative Record

- An administrative record is the collection of documents and information that forms the basis for the selection of a particular response action at a site.
- The Administrative Record will include the Feasibility Study, Proposed Plan, Record of Decision, and Community Relations Plan once finalized. The Administrative Record is located at:

**Molokai Public Library**  
15 Ala Malama Avenue  
Kaunakakai, HI 96748

**Hawaii State Library**  
478 South King Street  
Honolulu, HI 96813

**USACE Honolulu  
District Office**  
230 Otake Street  
Fort Shafter, HI 96858



U.S. ARMY

# PAPOHAKU RANCHLAND TARGET RANGE QUESTIONS AND ANSWERS

16

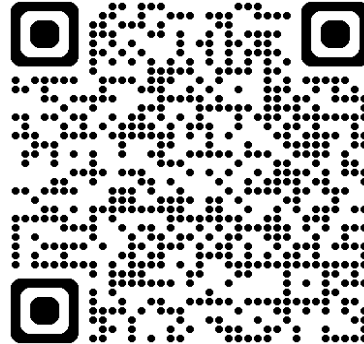


US Army Corps  
of Engineers ®  
Honolulu District

## ■ Papohaku Ranchland Target Range Website

- The site website is live! Please use the QR code below to access the website or visit online here:

<https://www.poh.usace.army.mil/Missions/Environmental/FUDS/Papohaku/>



- If you have any other questions, please do not hesitate to reach out to the U.S. Army Corps of Engineers Team at [HonoluluDistrictFUDSinfo@usace.army.mil](mailto:HonoluluDistrictFUDSinfo@usace.army.mil) or (808) 425-8921.



U.S. ARMY

# PAPOHAKU RANCHLAND TARGET RANGE 3RS OF EXPLOSIVES SAFETY EDUCATION PROGRAM

17



US Army Corps  
of Engineers ®  
Honolulu District

- Primary hazards to the public are “practice” munitions containing spotting charges or propellant (non-fragmenting hazards). Very small amounts of munitions debris fragments from high explosive live fire training have also been recovered, but no intact live fire munitions have been found to date. If it looks unfamiliar, it is best to not touch!
- If you would like to know more, further information can be found online at <https://www.3rs.mil> or by scanning the QR code below:



*Previous public meeting held on Molokai for the site.*



*Practice munitions previously found at the site (Source: Final Community Relations Plan, Papohaku Ranchland Target Range, Molokai Island, Hawaii, January 2019).*